

ATTACHMENT B – REPRESENTATIVE PHOTOGRAPHS

ATTACHMENT B - REPRESENTATIVE PHOTOGRAPHS

Photographs of 7 locations along the proposed AT&T fiber optic cable route, Segment 1. See Figure B-1 for photo locations (A-G)

PHOTO A – MARKER POST 2385+99 IVANPAH LAKE: CA/NV STATELINE LOOKING NORTH TOWARD PRIMM.



PHOTO B – MARKER POST 2385+99 IVANPAH LAKE: CA/NV STATELINE LOOKING SOUTH ALONG POWER LINE.



PHOTO C – MARKER POST 2506+04 NORTH OF PRIMM VALLEY GOLF CLUB LOOKING NORTH TOWARD IVANPAH LAKE.



PHOTO D - MARKER POST 2506+04 NORTH OF PRIMM VALLEY GOLF CLUB LOOKING SOUTH TOWARD PRIMM VALLEY GOLF CLUB.



PHOTO E – MARKER POST 2771+33 APPROXIMATELY 2.5 MILES NORTH OF NIPTON ROAD LOOKING SOUTH.



PHOTO F – MARKER POST 2771+33 APPROXIMATELY 2.5 MILES NORTH OF NIPTON ROAD LOOKING NORTH.

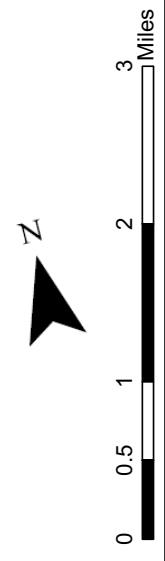


PHOTO G – MARKER POST 2902+61 AT NIPTON REGENERATION LOOKING NORTH TOWARD IVANPAH LAKE.





Figure B - 1
AT&T Fiber Optic Cable Route
CA-NV Stateline to Nipton Rd
Segment 1



Photographs of 5 locations along the proposed AT&T fiber optic cable route, Segment 2
See Figure B-2 for photo locations (H-L)

PHOTO H – LOCATION 3717+64 LAYDOWN AREA APPROXIMATELY 1.1 MILES
WEST OF CIMA ROAD.



PHOTO I - LOCATION 3884+26 STATE LANDS COMMISSION PROPERTY –
EASTERN BORDER LOOKING WEST.



PHOTO J – LOCATION 3902+84 STATE LANDS COMMISSION PROPERTY – WESTERN BORDER LOOKING EAST.



PHOTO K – MARKER POST 3985+11 ACCESS ROAD LOOKING EAST TOWARD CIMA ROAD.



PHOTO L – MARKER POST 4034+96 NEAR HALLORAN SUMMIT ROAD LOOKING EAST TO CIMA ROAD.



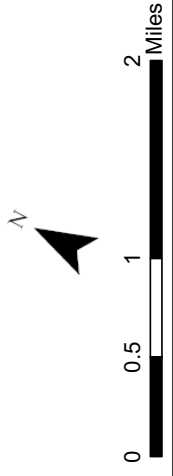
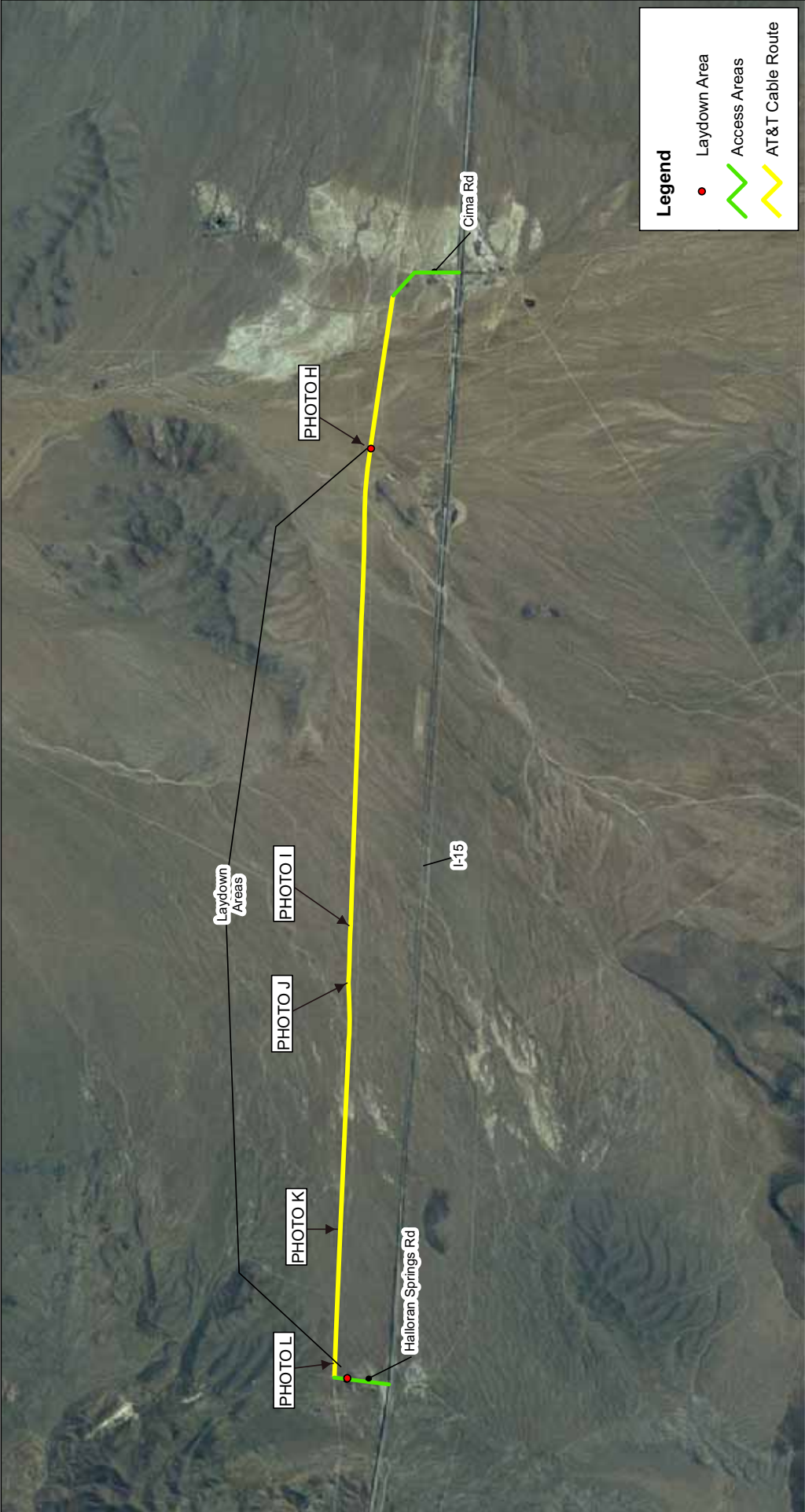


Figure B-2
AT&T Fiber Optic Cable Route
Cima Road to Halloran Summit
Segment 2

Photographs of 6 locations on Stoddard Wells Road along the AT&T fiber optic cable route, Segment 3. See Figure B-3 for photo locations (M-R)

PHOTO M – AT WESTERN END OF ALIGNMENT, ALONG STODDARD WELLS ROAD IMMEDIATELY ADJACENT TO I-15.



PHOTO N – STODDARD WELLS ROAD EAST OF BELL MOUNTAIN ROAD.



PHOTO O – STODDARD WELLS ROAD AT A DISTURBED ORV AREA.



PHOTO P - STODDARD WELLS ROAD AT A DISTURBED ORV AREA.



PHOTO Q – STODDARD WELLS ROAD LOOKING SOUTH.



PHOTO R – ROAD/RACEWAY IN THE LADWP RIGHT-OF-WAY.





Figure B - 3
AT&T Fiber Optic Cable Route
Slash X Regen to Victorville
Segment 3